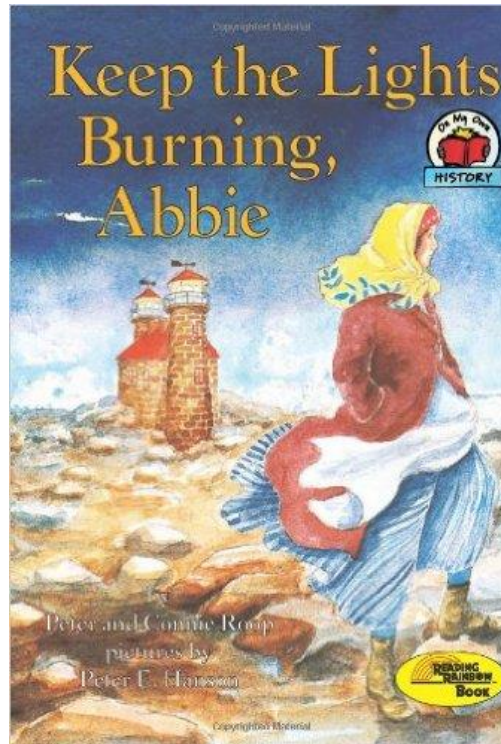


Geography Activities

about

Matinicus Rock



- **Matinicus Rock belongs to the State of Maine. What do you know about Maine? Find out about—**

Maine weather?

The Maine coastline?

The Maine State Flag?

The Maine State Flower?

The Maine State Tree?

The Capital of Maine?

How far away is Maine from where you live?

Look at map of the United States. Where is Maine?



Get this map at http://www.nationsonline.org/oneworld/usa_map.htm

Neat facts about Maine:

- **Sunrise in the United States happens first in Maine near the town of Eastport.**
- **Maine is the most northeastern state in the United States.**
- **The state animal of Maine is the moose.**
- **Maine has 3,166 offshore islands.**
- **There are more than 60 lighthouses in Maine!**

A Map of Maine

- Find the town of Rockland along mid-coast Maine.
- Find Penobscot Bay. It's the largest bay in Maine!
- Matinicus Rock is about where you see the “a” in “Penobscot Bay.”
- What larger bodies of water do you see along the coast of Maine?
- What other country does Maine border? What other state?
- What mountain range runs through Maine?
- What are the many squiggly blue spots on this map of Maine?



Get this map at

http://www.nationsonline.org/oneworld/map/USA/maine_map.htm

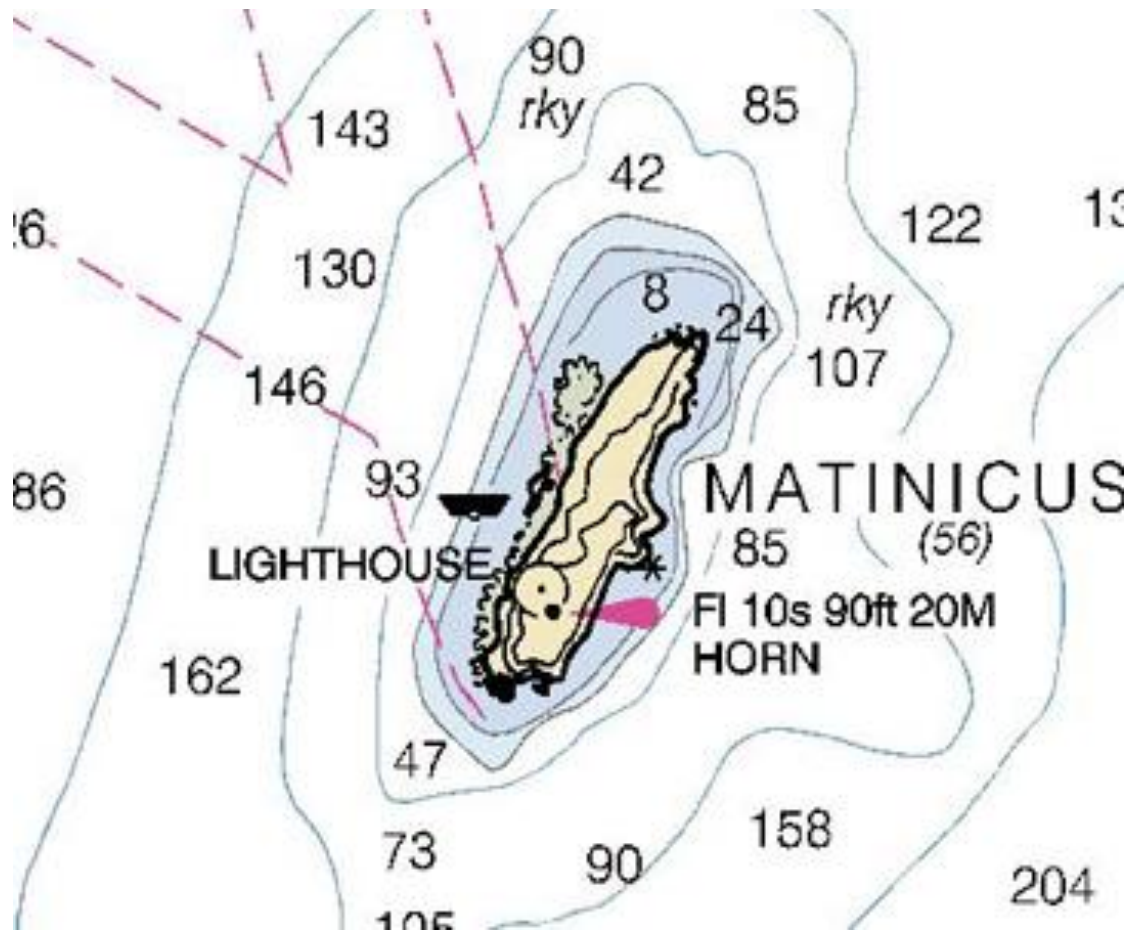


Study these pictures of Matinicus Rock. Bob Trapani, Jr. took the photo above. Chip Ross took the aerial photo below.



- **Describe the land.**
- **Describe the weather in the photos.**
- **Can you see any islands or shoreline in the distance?**
- **What color is the water close to the rock? Far from it?**
- **What is the fringe of white around the rock?**
- **What season do you think it was when these photos were taken?**
- **How would you reach Matinicus Rock today? There are no roads to it.**

This is a map of Matinicus Rock a sailor might use.



- The lighthouse is marked by a circle with a dot in the center. Find it.
- The light has a signature, or characteristic. It flashes white every 10 seconds.
- The light is 90 feet above water, or 20 meters. This includes the height of the island added to the height of the lighthouse.
- What kind of fog signal does it have?
- The numbers around the island show the depth of the water. The blue area is very shallow. The white area is deep. What is the deepest place shown on this map? What is the shallowest?
- The red dotted lines show where undersea cables lie on the sea floor to carry electricity and phone lines.